



# Smart XVR Kits

## Quick Start Guide

Please read the Quick Start Guide carefully before using the product and keep it.  
Related tools and documents of products, please download from [www.herospeed.net](http://www.herospeed.net).

# Statement

Thank you for purchasing our products, if you have any questions or requires, please contact us. This manual is applicable to Smart XVR Kits (XVR and PIR sensor cameras, sound alarm cameras, and gas detection cameras). It will be updated subject to product's updating; new version will be not noticed specifically. If this manual's any products description not accord with the real products, please in kind prevail.

## Safety Precautions

1. Please modify default password promptly after the equipment is installed, to avoid being stolen.
2. Please do not place and install the equipment in direct sunlight or near heating equipment.
3. Please do not install the equipment in wet, dusty or soot-burning places.
4. Please keep the NVR level installed, or install it in a stable place, and take care to prevent the product from falling.
5. Do not drop or splash liquid onto the NVR and ensure that no liquid-filled items are placed on the device to prevent liquid from flowing into the device.
6. Please install the equipment in a well-ventilated place and do not block the vents of the equipment.
7. Please use the equipment within rated input/output range only.
8. Please do not disassemble the equipment without notifying supplier.
9. Please transport, use and reserve the equipment in permissible range of humidity and temperature.

## Disclaimer

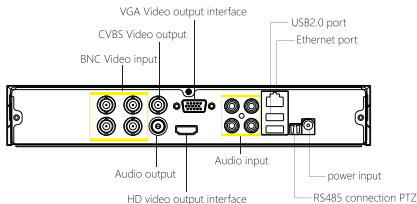
Please pay special attention to the following exclusions or restrictions:

1. If the product is terminated for any of the following reasons, our company shall not be liable for any personal injury or property damage to you or third parties: A. The installation or use of equipment is not strictly in accordance with the requirements; B. Maintenance of state or public interests; C. Majeure; D. Your own or third-party reasons, including but not limited to the use of third-party products, software, components and so on.
2. Our company does not guarantee the equipment for special purposes or use in any express or implied way. This equipment shall not be used for medical/safety equipment or other products which can cause life hazards and personal injury applications or dangerous uses of weapons of mass destruction, biological and chemical weapons, nuclear explosion and any unsafe use of nuclear energy or contrary to humanitarian purposes. Any loss or liability arising from such use shall be borne by yourself.
3. This equipment can perceive specific illegal invasion in correct installation and use, but it can not avoid accidents or personal injury and property loss caused by this. In daily life, please be vigilant and strengthen the awareness of safety precautions.
4. We are not liable for any consequential, accidental, special or punitive damages, requests, property losses, data losses and documents losses. In the maximum extent permitted by law, our liability for compensation shall not exceed the amount paid by you when purchasing this product.

# Product Rear Panel Description

XVR rear panel interface description: BNC Video input, CVBS Video output, Audio output, VGA Video output interface, HD video output interface, Audio input, Ethernet port, USB2.0 port, RS485 connection PTZ, power input, as below:

Analog camera interface Description: power input interface, BNC video output interface, as below:



**Notes: Image for instruction use only, the final goods are subjected to the real object.**

## Smart XVR Kits Quick Installation Guide

XVR Kits is convenient for installation via easy plug & use, no need any set up.

Start the installation guide step into:

### Step 1: Installation Preparation

Install XVR hard drive. Make sure all power are cut before installing.

Installation tool: Cross screwdriver (Please use the professional hard disk recommended by supplier).



(1) Loosen the screws that secure the sides and back of the cover and remove the cover.

(2) Connect HDD power and data cables between PCB board and HDD.



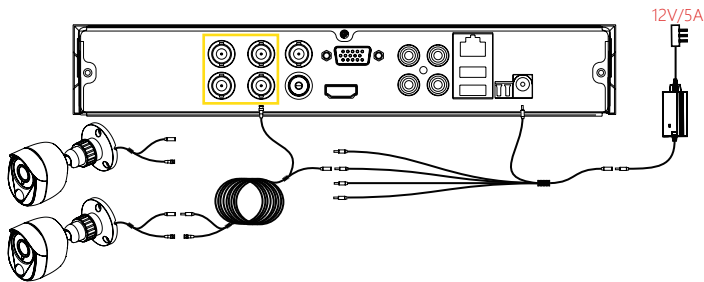
(3) Align the screw holes on the hard disk with the screw holes on the base plate and tighten the hard disk to the bottom with screws.

(4) Align the cover against the base and gently close it. Tighten the top .

**Notes: The picture is for reference only, the final product to prevail in kind**

## Step 2: Device Connection

Use the 5ch power cable splitter to connect with the power supply, and another end connect with XVR recorder and the HD camera power supply. XVR recorder will preview the screen via the BNC cable. (XVR default address: 192.168.1.88), the connect way as below:

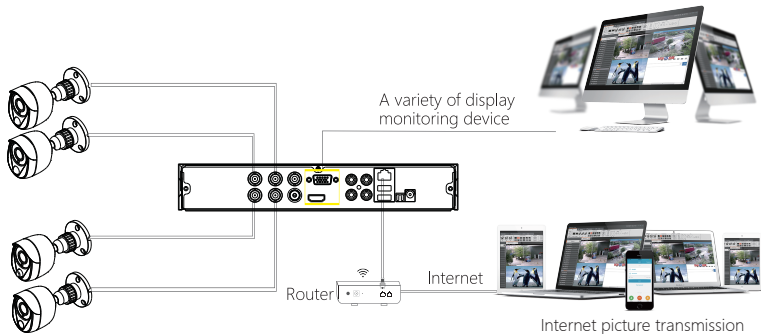


Notes: Images for instruction use only, the final goods are applied to the real object.

## Step 3: Make sure Smart XVR kits working well

Connected the XVR with the display, HD camera access XVR via the BNC, XVR and the camera plug in the power supply, without any operation, because it has been configured successfully before the factory, when the display appears on the analog camera video.

Note: The product configuration power adapter voltage is 12V, please ensure that the power supply (100V ~ 240V) normal, not below or above the power supply range, otherwise the device will get seriously damaged.

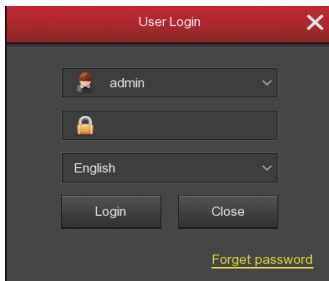


Notes: The picture is for reference only, the final product to prevail in kind

# System Login

Start up the XVR, right click the desktop and enter the user login interface. Input the user name and password, click " Login ".

System default user name : "admin" , password : "12345".



## Preview

Enter preview interface after device start up. Preview interface include date and time of system, and channel name. Login system, double left click to switch between full screen and multi-screen.

## Menu Basic Operation Instructions

### 1) Enter menu mode

Login system, right click to popup shortcut menu.

Left click [menu], enter the main menu interface.

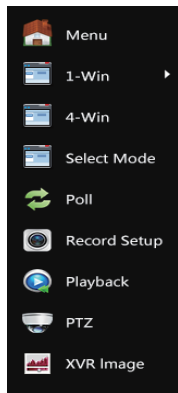
Left click [playback], enter playback operation interface.

Left click [record setup], enter record setting operation interface.

### 2) Exit menu mode

Right click to exit menu mode.

In the menu mode, right click to return to the previous menu (also for other menus).



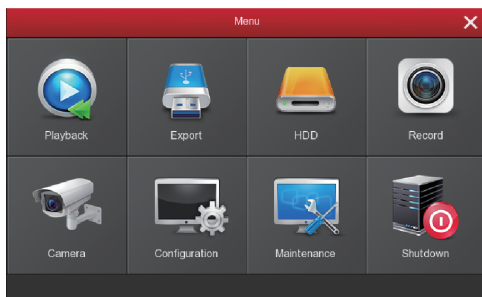
# Shortcut Menu Introduction

Right click to popup shortcut menu, the menu consists with the following three parts:

Preview mode: Select the preview mode in the menu bar you like.

Shortcut menu mode: There are Poll, Record, Add Camera, XVR image, you can click and the enter corresponding menu directly.

Main menu: It contains 【Playback】 , 【Export】 , 【HDD】 , 【Record】 , 【Camera】 , 【Configuration】 , 【Maintenance】 , 【Shutdown】 eight parts.



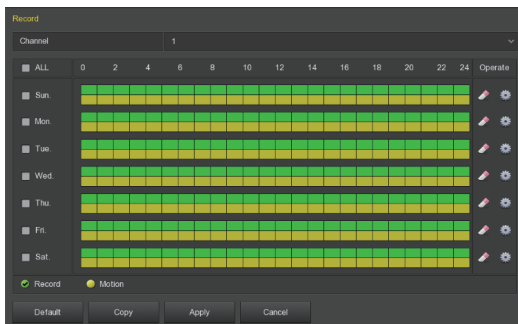
## Recording Setting

1、HDD formatting. Make sure that the hard disk is detected and works well. (You can check status of HDD from menu "HDD"->"General").

2、Enter "Record" interface to set recording from shortcut menu "Record" or main menu "Record". Default setting is all channels are recorded 24 hours a day.

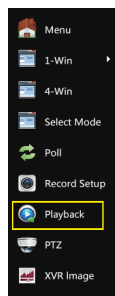


3、 Motion Detection Setting, enable "Motion" to activate motion recording, motion sections have no more than 6 time periods each day. If normal record and motion record are overlapped, it can only save the motion records while motion detection comes up.



## Playback

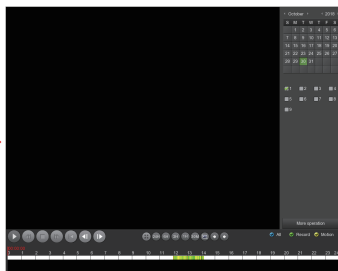
Enter "Playback" interface by clicking "Playback" from shortcut or main menu, select channels and search the record files and playback what you want.



Shortcut Menu



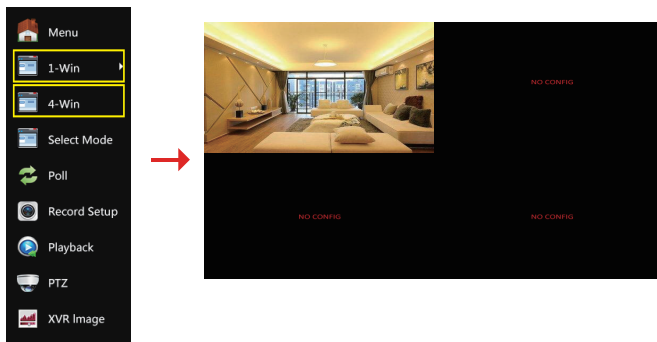
Menu Interface



(Video Playback Interface)

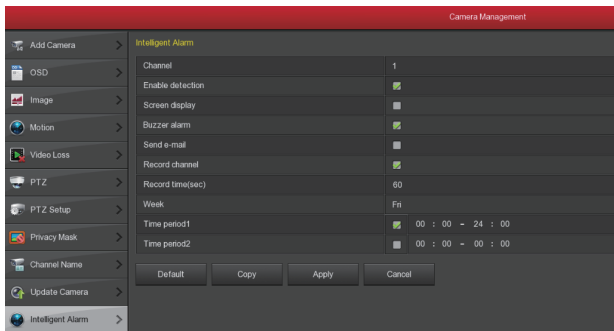
## Live View

XVR kits default match cameras device, connect all the devices to XVR, power on, connect the monitor device, then can real time preview. Left click 【1-Win】 / 【4-Win】 in the menu, and enter real time view interface, can add one or more cameras monitor Win at the same time.



## Intelligent Alarm

Right-click the shortcut menu in the XVR preview interface and click Menu→ Camera→ Intelligent Alarm to enter the alarm setting interface. Select the channel for PIR camera or gas detection camera to set the alarm configuration ("Screen display", "Buzzer alarm", "Send-email", "Record channel", etc) and time configuration ("Week" and "Time period"), then click "Apply" to save the settings. Select the channel for sound alarm camera, click "Enable detection", "Audio enable", set the "Output volume", "Week", "Time period", and then click "Apply" to save the settings. When a PIR sensor camera or a gas detection camera triggers an alarm, the XVR makes a corresponding alarm and the sound alarm camera sounds an alarm.

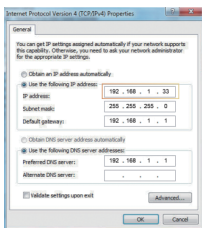




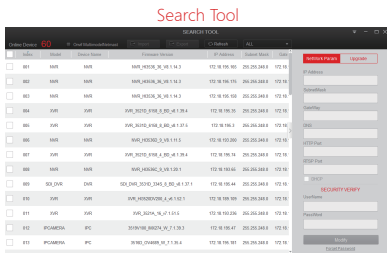
# PC Side LAN Access

XVR LAN login (the PC and the device are in the same router)

- ① Make sure the recorder and the connected computer are in the same segment. If not, please set IP address of your PC (computer) the same segment as the XVR's, for example: '192.168.1.33, but it must be different IP as the XVR's. (XVR default IP address is 192.168.1.88).
- ② Open IE browser, choose Tool- internet item-safe-default level-ActiveX Controls and plug-ins, All choose start using.
- ③ Open "Search Tool", double-click the target device from the search result to enter the login interface, or open the IE browser to enter the XVR address: such as http://192.168.1.88/ (If the port 80 of the XVR is changed to other, you need to add the changed port) to enter the login interface.
- ④ Login XVR: Enter the username and password and click "Login"(Notes: Default user: "admin", password: "12345").
- ⑤ Preview XVR through PC: Click "play" button in the bottom interface of 'LiveVideo'.

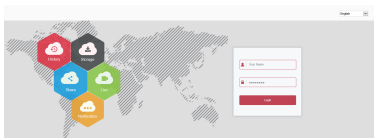


①



③

(First connect need download and install plugin)



④



⑤-1



⑤-2

# Mobile App Access XVR

Download and install BitVisin on smart phone by following way:

1. In the Android phone Google App Store or iphone App Store enter "BitVision" search, download and install.
2. Scan the following QR codes to download and install the App.



Android



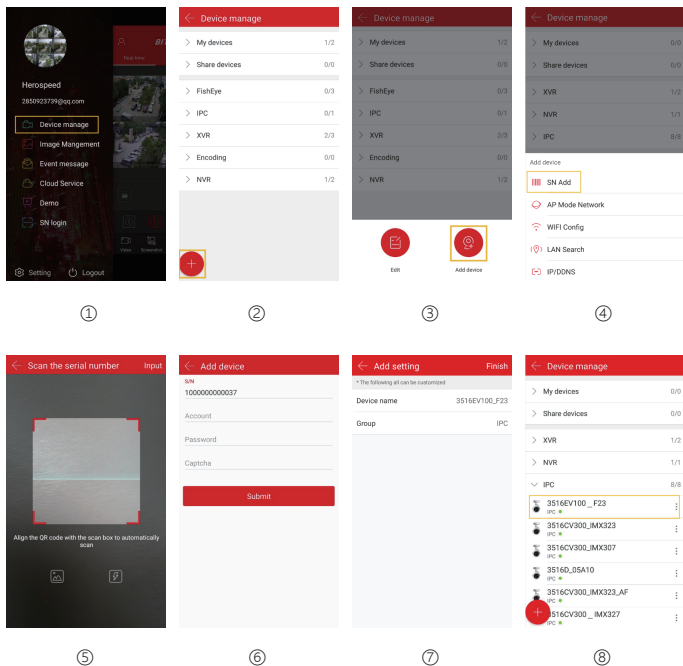
ios

3. Download from the following websites:

Android App: <https://play.google.com/store/apps/details?id=com.gzch.lsplat.bitdog>

iOS App: <https://itunes.apple.com/app/id1419463554>

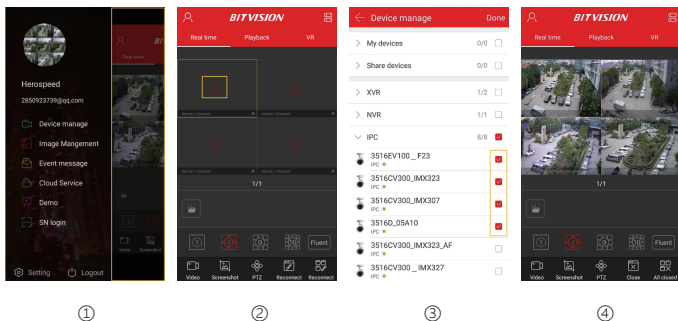
Open BitVision App (new users need to register an account to log in first). The steps to add devices are as follows:




- ① Click **【Device manage】** In the sliding menu bar;
- ② Click **【 + 】** ;
- ③ Click **【 Add device 】** ;
- ④ Click **【 SN Add 】** ;
- ⑤ Scan the QR Code printed on the device sticker or posted on the P2P interface;

- ⑥ Enter device user name, password and Captcha (printed on the label), click **【Submit】** ;
- ⑦ Click **【Please set the device name】** , enter the device name, click **【Done】** ; Click **【Please choose a group】** , choose camera group, click **【Done】** , click **【Finish】** .
- ⑧ The device was successfully added to the device list.

The steps to preview the video are as follows:



- ① Click on the right part of the sliding menu to enter the main interface;
- ② Click **【Real time】** , click **【】** to enter the "Device manage" interface.
- ③ Choose the device channel you want to preview, click **【Done】** .
- ④ Start to play the real-time video.